

EAST MONTPELIER SIGNPOST

Volume XIV, No. 6

July/August 2004

ED AND GLADYS - ON THE HORN OF THE MOON

Ginny Burley

In 1993, to celebrate their 25th wedding anniversary, Ed and Gladys Cote had one of the biggest parties ever seen in the Horn of the Moon neighborhood of East Montpelier. On the first day, Ed's French Canadian heritage was the focus. Friends and relatives from Vermont and Canada came to East Montpelier with great music - fiddles, concertinas, spoons, and French songs. The next day, Gladys' Kentucky heritage held sway, with a fish fry, real hush puppies and some Southern drawls. On the third day, a genuine Vermont contra dance brought it all together. What were we celebrating so abundantly? The fact that on one lucky day in 1968, Ed Cote, a life-long resident of the Horn of the Moon, brought his bride Gladys, a school teacher from the blue grass country of Kentucky, to Vermont. He worked on the railroad and on the family farm; she started teaching in the North Calais School, moving to East Montpelier Elementary School after the birth of their first son Paul in 1970. The rest, as they say, is history. In June, Gladys retired from teaching at EMES after 33 years, one of the most beloved teachers in East Montpelier's history.

Ed's parents, Adjutor and Leona Cote, came from Quebec Province to Vermont in the Depression era. Adjutor worked in

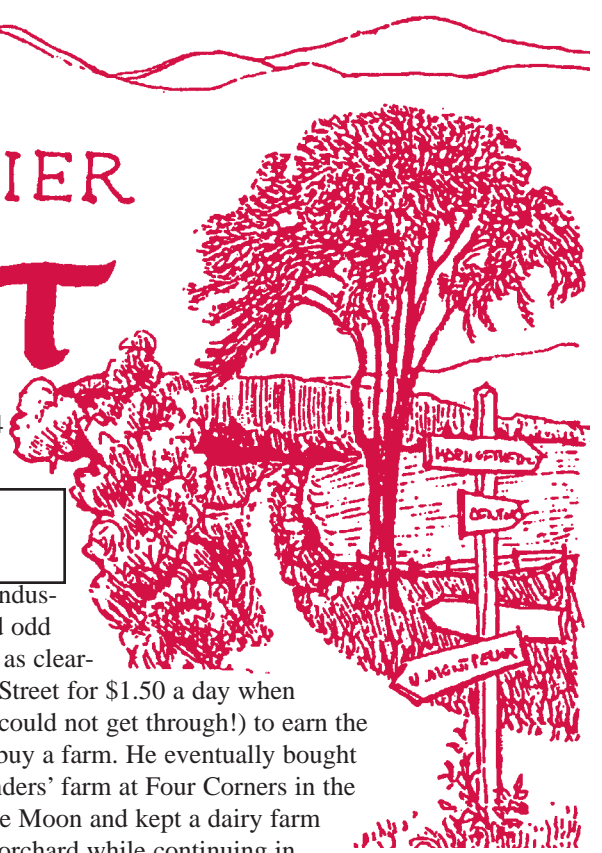
the stone industry and did odd jobs (such as clearing North Street for \$1.50 a day when the plows could not get through!) to earn the money to buy a farm. He eventually bought Pearly Sanders' farm at Four Corners in the Horn of the Moon and kept a dairy farm and sugar orchard while continuing in the stone sheds. Ed remembers milking cows - 60 of them! - by hand when the power went out, and he and his father sawed ice from Horn of the Moon Pond and layered it with sawdust to keep the milk cool all summer. Ed went to the Horn of the Moon Schoolhouse and St. Michael's High School. When I asked Ed what was the biggest change he'd seen during his lifetime here, he immediately said, the schools. "We had one-room, neighborhood schools, and no busing." He went to St. Michaels in Montpelier for high school (a classmate was future Senator Patrick Leahy.) Without buses, the Cote siblings (Ed, brother Marcel and sister Florence) drove the kids from the Horn of the Moon to Montpelier every day. Ed can remember every single car they drove!

Adjutor Cote was the last farmer in town to switch from horses to a tractor. In 1954, he finally told the neighbors, "If I want to keep the farm, I'd better buy a tractor. The boys don't like the horses." Ed is an animal lover, as his incredibly spoiled 11 year old Labrador, Chief, will attest, but he has a genius for machines. In 1959, Ed started working for the railroad. S.M. Ponsley owned the Barre Montpelier railroad and other lines all over the country. Ed started as a mechanic and by the age of 25 was superintendent of motive power and equipment. As chief troubleshooter, he was sent wherever they needed him, including a stint in Frankfurt, Kentucky.

Meanwhile, Gladys and her three sisters grew up in Versailles, Kentucky. At that time, teaching was one of the accepted professions for women, and Gladys attended Eastern Kentucky State College to become a teacher. Playing clarinet in the college band earned her half of her tuition! After graduation, she joined a childhood friend teaching in Michigan. That friend had a beau back home in Kentucky, and



Continued on Page 3



TOP OF THE SIGNPOST

How fortunate we are to live in a community where we know most of our neighbors. When they have a crisis, we feel their pain and try to help. When there are happy times, we share the joy! This may be partly because of the lower population density. But it is also due to the fact that we have people among us who have worked to promote a feeling of community.

Some outcomes of their work have been such things as Rally Day, the Signpost, the Historical Society, an active Green-up effort, preservation of 4 Corners Schoolhouse, the town trails, and at least one neighborhood actually holds regularly scheduled potluck suppers.

As a teacher for many years in our elementary school, I felt a connection to our community through interaction with the

children and families as they progressed through EMES. It was only as years passed after my retirement that it became clear how important that had been to me. I now depend on the activities mentioned above to provide that connection for me. What better way is there to thank the people who have promoted these activities than to share in a small part of the effort.

A church friend once told me that until he became involved, church was just something he did on Sunday morning. After he became involved, it was a labor of love. We hope each of you will find ways to share our special community.

Darlene Grundy

"Thank you" to these loyal supporters.

Raylene Blanc
Mabel Wright
Joyce Bean
Berta Scott

Stanley Christiansen
Robert and Vicki Perry
Leon and Jean Boucher
Cynthia Tomaszewicz

Please, consider joining this select group!

Contributions pay about 30% of the \$5,000 it costs to print and mail the *Signpost* each year. The auction at Rally Day brings in about half and the advertising and subscribers make up the rest.

Contributions help make possible the free delivery to every home in East Montpelier.

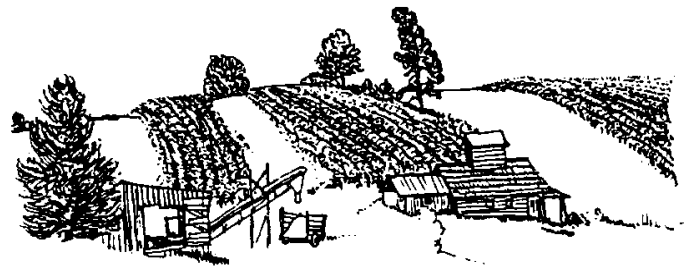
Any amounts — \$5, \$10, \$25, \$50 — are most welcome. Mail them to PO Box 184, East Montpelier, VT 05651. The staff of the *Signpost*, and your neighbors, thank you!

BUSINESS CARD ADS

The size is 3.667 by 2 inches. (The size of this box.)
A pre-printed business card can be used as long as any image and text are clear and distinct.

We will set your ad at no additional charge if you provide the text and some indication on how it should be presented. If you want a graphic, it must be clear, distinct and accompanied by a diagram of how it is to be used.

New and renewal ads are \$20/issue or \$100/year. Call Dave Coburn 223-6886 or email dacoburn@adelphia.net for more details. You will be sent a form with full instructions on how to order your ad.



EAST MONTPELIER SIGNPOST

Published six times a year; mailed free of charge to all residents of East Montpelier

Jean Cate, Publisher

Dave & Darlene Grundy, Copy Editors
476-4300 {ddgrundy@aol.com}

Dawn Anderson, Mailing
229-0606 {danderson@vtlink.net}

Janice Waterman, Features
223-5826 {gmwaterman@cs.com}

Rhoda Chickering, Organizations Editor
229-5005 {rhcic@sover.net}

Charlie Catlin, Records Editor
229-4273 {shcharlie@hotmail.com}

David Coburn, Layout/Design
223-6886 {dave.coburn@adelphia.net}

Elaine Manghi, Photographer
229-5811 {maplenutbread@hotmail.com}

Nancy Disenhaus, U-32 Reporter
229-4320 {catehaus@together.net}

Rob Chickering, Business Manager
229-5005 {rhcic@sover.net}

Sylvia Tosi, Town Records
223-3313 {eastmonttc@adelphia.net}

Janet MacLeod, Artist
223-2296 {janetmac@sover.net}

Ellen Knoedler, EMES Reporter
223-6931 {eknoedler@u32.org}

SUBSCRIPTIONS

Do you have a son or daughter going to college, a mom or dad who are now living in Florida? Would they like to stay in touch with what's happening in Town? Send the *Signpost*! Or maybe it's you who are headed elsewhere. Subscribe for yourself. New and renewal subscriptions are \$15.00 per year. Send payment with recipient's name and address to: PO Box 184, East Montpelier, VT 05651. Contributions should go to the same address. And we thank you!

(Continued from Page 1)

one day she invited Gladys on a blind date with her beau's friend. That friend was Ed!

After a few years of long-distance (Michigan to Kentucky) courtship, the couple came to Vermont. Adjutor's health was failing, and Ed was needed on the farm. He was also needed on the St. Johnsbury and L.C. Railroad, and he did both jobs for many years. In 1993, Ed retired after 35 years with the railroad, and he can still fix anything mechanical, even making his own parts for machines.

Their second son Daniel joined the family in 1975, arriving conveniently during the school breaks. Daniel, a licensed pilot, is manager of Flight Based Operations at Burlington International Airport. First son, Paul is a computer engineer in Lexington, Kentucky. He is married to Laura, and they have a three year old son, Jared, who already has his own scrapbook - more about that later.

Gladys has taught for 37 years, 33 of them in East Montpelier. Her favorite grade is first grade, which she has taught for 19 of those years, because she loves teaching kids to read. Each year is different - each class, each child. In first grade, they come in with so much to learn. You can see the growth. The growth is daily. Hundreds of East Montpelier parents and youngsters can attest to Gladys' great teaching.

What's next for the Cotes? Travel! They want to do a big tour of the country and hit all the national parks. They want to spend more time with their grandson in Kentucky. And Florida looks good in the chill of winter. Gladys always leaves the freezer at home well stocked when she travels, so Daniel won't go hungry. Ed plans to keep tinkering (his 1957 Thunderbird is almost ready for the road), and Gladys has discovered the joys of scrapbooking. Grandson Jared's life is documented in his own album, and she has family and neighborhood books in the works. Neighborhood events, like the Cote's unsurpassed sugar-on-snow parties, and their Halloween Open House, are also catalogued.

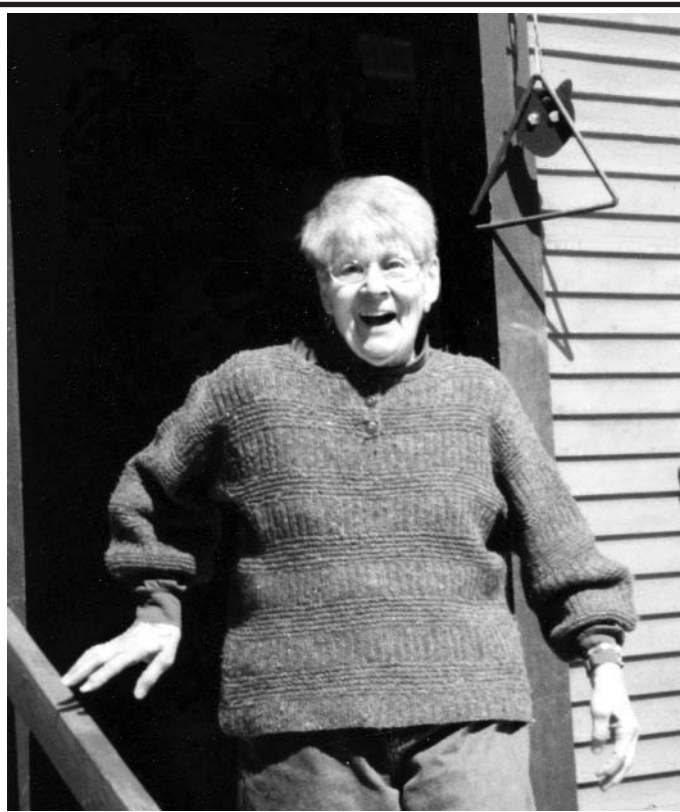
Wherever they wander, Horn of the Moon in East Montpelier will remain home base for Ed and Gladys Cote for many years to come.

The Burleys have had the good fortune to live next door to the Cotes, the Best Neighbors in the World, since coming to East Montpelier in 1979. Ginny is Chair of the U-32 School Board and Director of Community Connections, the regional community education program.

AUDY CONTRACTING
"Quality Work, at Reasonable Prices"

Interior Remodeling Sheetrocking Taping Painting		Exterior Roofing Siding Windows Decks
--	---	---

Renovations/Additions
 P.O. Box 136
 East Montpelier, VT 05651
 (802) 223-7899 *Fully Insured*



JEAN CATE
1924 - 2004

The staff of the *Signpost* were greatly saddened by the untimely passing of Jean Cate. She was the guiding light for this newsletter and her good humor and gentle touch will be sorely missed.

We join with everyone in East Montpelier to express our sympathy to Jean's family for their loss.

CHURCH BELLS



Old Brick Church

Angelo Tillas, Pastor
 Sunday Services at 10:00 am
 Prayer Meeting Saturday at 10:00 am
 Phone: 223-1232



Old Meeting House

Rev. Susan Cooke Kittredge, Pastor
Rev. David W. Connor, Associate Pastor
 Worship - 9:30 am
 Child care is available
 Phone: 229-9593



Crossroads Christian Church

Rev. Bob Walton, Pastor
 Worship and Sunday School - 9:30 am
 Phone: 476-4843 & 229-9389

BEHIND THE SCENES AT THE TOWN OFFICES

Jessie Taylor



This is the third article in a series that is meant to inform us all on how our town works — what makes East Montpelier click. If you will remember, the first article was on the Town Clerks and their role in the scheme of things, and the second was on

the Selectboard. This week I talked with Marlene Betit, Town Administrator.

In the past decade, new laws, regulations, and computer technology have outdone the capacity of Selectboards and Town Clerks. Thus, most towns have found it necessary to have a paid Administrator. Marlene came on board in April of 1999. She said that for the first six months she just settled in and carried on in the fashion of her predecessor. Then she kicked into gear!

Marlene comes from a business background with one degree in business and another in banking. She was a bank officer for ten years and then did management supervision and computer instruction. All this she brings to the Town Offices in a flourish of professionalism, competence and organization. As she put it, with a smile, "You can't be a generalist here; you really can't be a generalist!" Almost everything involved in running the town goes across Marlene's desk at some point.

I don't generally like to include lists but here it seems warranted to make the point. Here is a very partial list from her job description:

- work with the Selectboard - research, minutes, agenda, correspondence, review expenditures
- prepare town budget & Capital Reserve Plan
- representative with state/federal agencies
- prepare all liability coverage, insurance audits
- liaison with town attorney
- handle correspondence for school board
- write Articles of Warning
- write grant proposals
- prepare invitations to bid

The job description for Town Administrator is three pages long. The above mentioned seemed to me to be the 'bigger' responsibilities. However, like any well oiled machine, there are

the nuts and bolts that one doesn't see that are necessary for smooth operation. While chatting with Marlene, I took notes furiously as she calmly rolled her desk chair from one cabinet to another pulling out files, books, and notebooks. At one point she hauled out a four inch binder and exclaimed that it was the compilation of the 2003 town meeting report. At least 2/3 of the binder was dedicated to drafts of the final budget!

Marlene has reworked a great portion of the Town Administrator position to reduce redundancy, add efficiency and save time. One of the major accomplishments has been a revamping of the computer system. All the town computers are now upgraded and using the same programs. The schools have been linked to the e-mail system for better communication. There are spreadsheets that correct themselves with the change of one figure. It is indeed a smooth machine.

The position of administrator has necessarily picked up new responsibilities as time goes on. Marlene now writes Articles of Warning, manages the new 911 addresses, recruits for Selectboard appointments, and is in constant contact with all the town committees. As you can see, it certainly isn't a generalist's job description. Marlene brings a grace to the chaos, affecting new changes in a smooth and efficient manner. Somehow she manages to make all the details of the job meld. Even her office space is well ordered, adorned with pictures of her kids and classical music playing in the background. Marlene is right at home. Thank you for your services, Marlene.

RALLY DAY AUCTION

This year the auction will again be a live event before the fireworks. Dave Connor has agreed to once again act as auctioneer, making this event enjoyable for auction shoppers as well as those of you interested in hilarious entertainment. Please plan to attend. We will also have silent auction items up for bid in the cafeteria throughout the day.

The auction committee is looking for auction items. If you have a service to offer or some auctionable items to donate call Rhoda Chickering at 229-5005.

The Signpost Auction has been an annual event since the inception of the Signpost. It is this fundraiser and your donations that make it possible for the paper to be delivered to every East Montpelier household six times per year absolutely free of charge.

✓ Free Estimates ✓ Fully Insured ✓ Quality Work

P.W. McCOY CORP.

**Snow Plowing • Driveway Repair • Bush Hogging
Bucket Loader Work • Light Excavating
Rototilling • Landscape Grading & Seeding**



Patrick McCoy
802/223-5878



964 Bliss Road, E. Montpelier, VT 05651

Maple Syrup • Vermont Products • Country Store
Corporate Gifts • Woodshed Theatre • Folk Art



MORSE FARM

MAPLE SUGARWORKS

"Have a Great Summer!"

1168 COUNTY ROAD, MONTPELIER, VT 05602
1-800-242-2740 • WWW.MORSEFARM.COM

HAPPENINGS AROUND TOWN

ZONING REGULATIONS UPDATE

East Montpelier's zoning regulations and subdivision regulations were written and adopted during the 1970's and have had few changes since their adoption. The Planning Commission has embarked on a major project of updating these regulations in order to clarify and expand definitions, eliminate ambiguities, provide greater consistency with state statutes and make them as straight forward and "user-friendly" as possible.

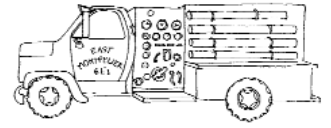
The Planning Commission worked hard during the past three years to rewrite the Town Plan which was approved by the Select Board and by the Central Vermont Regional Planning Commission last year. New zoning regulations will also reflect implementation of this Town Plan. The Town Plan approval made the town eligible for state planning grant funds for the first time. The Commission applied for, and was awarded, grant funds to hire a consultant to help it with the zoning regulation update.

The East Montpelier Planning Commission will be working on this update project for much of the next year. We very much want input from as many townspeople as possible. Public meetings and hearings will be held, however, we encourage anyone with an interest in participating in this project to contact the Zoning Administrator, Dean Monteith, at the Town Office.

Rob Chickering, Chairperson

EAST MONTPELIER FIRE DEPARTMENT

May marked the sad passing of longtime firefighter Ernest Dodge. His years of service live on. May also brought us the birth of Colin James Audy, son of John and Cathy Audy. For those of you who do not know, John Audy is the East Montpelier Fire Chief.



On May 23 we hosted our 40th anniversary celebration at our Templeton Road station. A traditional "wet down" was performed on Engines 2 and 4 with Chief John Audy and Deputy Chief Tom Brazier getting thoroughly soaked. A wet down occurs as a way of christening new fire trucks. In this instance, trucks from Montpelier, Berlin, Worcester, Peacham and Middlesex participated by bringing along their hoses and wetting down our new equipment along with our fearless (though wet) leaders. It was a memorable event.

In May, we held our annual meeting which was a barbeque hosted by the department officers. The following positions were filled: Chief, John Audy; President, Diana Chace; Board of Directors, Bill Amell, Mike Bliss; Chaplin, Robin Copping.

Safety Tip: If you're out walking the roads after dark, wear light colored clothes and bring along a flashlight. Drivers cannot see you otherwise!

Robin Copping, Chaplin

FIRST STRONG LIVING CLASS GRADUATES

May 14th witnessed the conclusion of the Four Corner's Schoolhouse's first Strong Living Class. For twelve weeks, nine hearty participants from the East Montpelier region—ranging from ages 50 to 95—met twice a week to build muscle mass and balance through a weight training program designed by Tufts University. A second class will be graduating June 18, resulting in a total of seventeen stronger livers working out regularly in the Four Corner's Schoolhouse during the spring.

East Montpelier participants demonstrated noticeable improvement in strength, balance, and endurance over the course of twelve weeks—from lifting more weights to increased balance and greater range of motion. With joke telling, story sharing, and the occasional choral outbreak, the East Montpelier strong-livers are testimony to the fact that lifting weights can be fabulously fun. Participants plan on continuing the program in the fall, and are seeking a certified Strong Living instructor to create more classes in order to meet the high demand.

The Strong Living is taught in over 47 sites throughout Vermont, including classes in Barre and Montpelier. The program is designed for individuals age 50 and older, of varying fitness levels. Strong Living consists of over an hour of exercise utilizing body mass, leg weights, and dumbbells for strength training. All exercises are done with the use of a chair or alternative means of support. The East Montpelier program is sponsored by the Neighbor-to-Neighbor AmeriCorps program and the Central Vermont Council on Aging, and generously hosted by the Four Corner's Schoolhouse.

Lee Awbrey, Strong Living Coordinator



Back row: Marjory St. John, Paulie Coburn, Malcom Fielder, Diane Fielder, Doris Washborn, Ken Clayton, Barara Ploof.
Seated: Sue Barrett, Lee Awbrey.

BIGELOW GARAGE DOOR SALES & SERVICE

The Common Sense Company

Experience since 1974

Residential • Commercial • Industrial

Matt & Janet Bigelow
East Montpelier, VT

PHONE 802-229-5489
PAGER 802-826-2273

e-mail Bigelowjam@aol.com



MILESTONES

Birth

- > Maeve McFadden Hoffert, born April 2, daughter of Michelle Risse McFadden and Charles Edward Hoffert IV.
> Joshua Leigh Dunkling, born April 4, son of Jill Marie Tanner and Mark Todd Dunkling.
> Anika Rowan McKenna Thiemann, born April 10, daughter of CarolAnn McKenna and Michael John Thiemann.
> John Allan Mekkelsen, born April 19, son of Laurie T. & Bruce Allan Mekkelsen. Grandson of Sylvia & Donald Tosi and John & Grace Mekkelsen.
> Jackson Richard Scribner, born April 29, son of Tracy Alyn Cano-Scribner and Joshua Richard Scribner.
> Tia Rose Leno, born May 12, daughter of Michele & Sterry P. Leno.
> Collin Joseph Audy, born May 8, son of Kathleen Celia & John Joseph Audy Jr.

Marriages

- > David Roger LaFlower to Linda Marie LaFlower, married April 3, 2004.
> Randolph Scott Donald to Melissa Ann Stanley, married April 17, 2004.
> Scot Patrick Sawyer to Christine Mary Rotondo, married April 17, 2004.

Deaths

- > Paul William Crossan, died April 7, 2004, husband of Janice Crossan.
> Irene C. Clark, died April 18, 2004, wife of Dwight Clark.
> Ernest Winthrop Dodge, died May 13, 2004, father of Jeremy E. Dodge.
> Jean Cate, died June 2, 2004, wife of Wes Cate, mother of Wes, David and Paul Cate.

Property Transfers

- > Dody Gallison to George McBride and Barbara Nolan, 0.94 acres & mobile home, County Rd.
> Benjamin W. & Harriet H. King to Michael & Elizabeth Hepp, 15 acres & dwelling, County Rd.
> Mary Jane Percy f/k/a Mary Jane Hadley, to Robert W. Ducan, 10.13 acres, Upper North St.
> Shayd A. & Laurie A. Pecor to Royal LePage Relocation Services International Inc., 0.48 acres & dwelling, VT14S.

- > Royal LePage Relocation Services International, Inc. to Steven W. & Lisa K. Gilman, 0.48 acres & dwelling, VT14S.
> Alban & Margaret E. Richey to John Robert Hamilton, 65 acres & dwelling, Butterfield Rd.
> Edwin A. Clark to K. Putnam & Susan Clayton, right-of-way easement, Horn of the Moon Rd.
> K. Putnam & Susan Clayton to Arthur E. & Amanda A. Clark, right-of-way easement, Horn of the Moon Rd.
> Edwin A. Clark to Arthur E. & Amanda A. Clark, 7.03 acres, Horn of the Moon..
> Richard J. & Ruth A. Weeks to Marilyn S. Wingersky, Bruce W. Blow and Katherine A. Langer, 0.81 acres & dwelling, Clark Rd.
> Paula & Lawrence Perry to Paula & Lawrence Perry, 2.1 acres & dwelling, Cherry Tree Hill Rd.
> Bryan R. & Michelle M. Bedell to Teresa Ettouzer, 0.32 acres & dwelling, Paul's Square.
> Norman Ferland, Monica Richardson, Michelle Tavaglione & John T. Ferland, to Norman Ferland, 2.3 acres & dwelling, US2 Village.
> Claudia & Bruce Fitch to Mark Hauser, 2 mobile homes - no land, Fitch Rd.
> Gordon Wells & Peter Wells to G. William Martin Jr. & Dorothy J. Allard, 15.83 acres & dwelling, VT14N.
> Robert Andrew Barrett to Geroge & Robin McBride, 17.53 acres & vacation home.
> Thaddeus & G. Daysi Ward to John & Phyllis Sanfacon, 10 acres, Wheeler Rd.
> Robert E. Ladd to Eric R. Ladd & Lynn M. Choquette, 7.3 acres & dwelling, Cherry Tree Hill Rd.
> Fecteau Homes to Aaron W. & Nicole Codling, mobile home, Walbridge Rd.
> Richard S. & Jane M. Staudt to Jane M. Staudt, 117.8 acres & dwelling, North St.
> Michelle E. & Seth B. Gardner to Emily & Levi Leighty, 5.6 acres, Stoney Corners Rd.
> Michael R. Ryan, et al, Co-Administrator of the Elaine L. Ryan Estate, to Martha I. Page, 14 acres & dwelling, Barnes Rd.
> Frederick C. Strong, trustee of Frederick C. Strong Revocable Trust to Frederick C. & Nancy S. Strong, Trustees of the Strong Living Trust dated 12/19/03, 97 acres and dwelling, Center Rd.

- > Michael R.Ryan, et al, Co-Administrator of the Elaine L.Ryan Estate, to Steven F. & Karen S. Omasta, 0.63 acre, Barnes Rd.
> Walter E. Brehaut to Walter E. Brehaut, Ruth & Richard Weeks, 1 acre & dwelling, Clark Rd.
> Pauline R.Marshall to Shawn & Cindy Marshall, 1 acre & dwelling, Railroad Lane.
> Martha Israel Page to Rebecca R. & Stephen P. Miracle, easement, Barnes Rd.
> Margaret E. Richey to William D. Smith, 2.5 acres, Taylor Farm Rd.
> Adair A. & Dorothy P. Graves to Steven E., Mitchell Dean, & Kevin A. Graves, 14 acres & dwelling, Rock Rd.
> Putnam & Susan Clayton to Putnam & Susan B. Clayton, Trustees of the Clayton Living Trust dated 1/16/04, 20 acres & dwelling, Horn of the Moon Rd.
> Donald J. & Sylvia M. Tosi to Donald J. & Sylvia M. Tosi, Jeffrey L., Steven J., Gregory S. & Marcia L. Tosi and Laurie T. Mekkelsen, 0.30 acres & dwelling, Paul's Square
> Elizabeth L. Hudson to Pamela Pollock, Timothy Hudson & Gary Hudson, 3.1 acres & dwelling, Center Rd.
> Stephen R. & Carolyn G. Swift to William & Catherine Swift, 38.5 acres, Clark Rd.
> G. William Martin & Dorothy J. Allard to Robert P. O'Keefe Jr. and Justine O'Keefe, 10.66 acres & dwelling, VT14N.

Selectboard

Tom Brazier, Chair,
Martha Holden, Edie Miller

March 29, 2004

- > Thomas Brazier was elected chair of the selectboard.
> Dave Coburn will discuss the Fairmont Farms repayments with the Agency of Community Development.
> Future repayments from the Sandy Pines grant may be used for septic and water needs in the village.
> Zoning Administrator Dean Monteith will determine if there are any junk car or solid waste clean up needs to be addressed.
> The Tax Abatement Agreements for



THE TOWN WEATHERVANE



Kenneth Pearson, Charles Stone and Susan Atwood-Stone were approved.

- > Excess Weight Permits were approved for Clifton Rathburn Jr., Bert French Jr., Carroll Concrete, Hutch Crane & Pump Rental Corp., Gaskins & Sons Concrete, Feed Commodities Int'l Inc., and Universal Contractors.

April 12, 2004

- > The board decided to move ahead with the Bridge #71 project and the utilization of Route 214 as a detour for one construction season from 4/01/04 - 8/15/04.
- > Road Foreman Garand reported twice as much gravel was used this mud season as the average year. He will ask for cooperation from farmers for next year to reduce road use during mud season.
- > The board voted to amend Article VII of the Traffic Ordinance establishing no parking on Center Road adjacent to The Old Meeting House.
- > The board voted to approve the Annual Highway Plan.
- > Excess weight permits were granted to John Gross Trucking and E E Packard.
- > The board approved the grant application to FEMA for two generators as prepared by Bill George, Emergency Management Coordinator.

April 26, 2004

- > Two informational meetings were scheduled for April and early May; one for village septic needs and one for an update on the Singing Bridge, #71.
- > The board agreed to provide Rosendo Cueto with an assistant in order to do the data entry necessary for the NEMRC Grand List software.
- > The town will continue to look for funding options for work on the Coburn Road and Cate Farm Bridges.

May 3, 2004

- > The board voted, contingent on approval by the Town Attorney Bjornlund, to use a two year rolling average revenue for Winooski Hydroelectric Company's valuation for the grand list in order to maintain a consistent tax payment for Winooski Hydro.
- > Excess Weight Permits were granted to Wells Construction, Gregory Bartlett, and Gene Armstrong.
- > At the April 28th meeting to discuss village septic needs, Tim Carver, Art Montague and Bob Morey agreed to serve on a Wastewater Advisory

Committee with septic officer Richard Czaplinski. They will be looking at maps that show soil types and do a house by house survey for pollution sources.

- > The board signed the contract for Cartographic Assoc. to provide the town with GIS digital map conversion.

May 4, 2004, Special Meeting

- > After meeting with emergency management personnel and Mr. Bragg, the concerns about the Singing Bridge , #71, have been addressed and the project will be back on the transportation schedule.

Planning Commission Rob Chickering, Chair

May 6, 2004

- > The board approved the application for Ellen Leonard and Janice Walrafen for a home occupation business for a child day care center and art studio at 170 Cherry Tree Hill Road.
- > The board voted to approve the application of Michael and Cheryl Rus to build an addition to their existing business at 3240 Towne Hill Road.
- > The board voted to approve the amended final subdivision plat for the Cookson subdivision.

Elementary School

Jan Aldrich, Chair 229-0406
{Janice_Aldrich@hotmail.com}
Brian Bishop 223-5332
{bbdbishop@adelphia.net}
Joe Buley 233-7970
{jbuleyjr@adelphia.net}
Matthew Curtis 223-7403
{curtis-mj@msn.com}
Julia Haynes 223-1651
{julia@vsha.org}

March 4, 2004

- > Jan Aldrich was elected chair of the board, Joe Buley was elected vice-chair, Julia Haynes was elected clerk of the board.
- > Meetings will be held at 6:30 p.m. on the second Tuesday of the month with the exception of April which will be held on April 6.
- > Advertising will be through *The Times Argus* and *The World*, with the *Burlington Free Press* for a limited number of staff positions. The agenda will be posted

at the Town Clerk's Office, EMES, C.P. Dudley's Store and Morse Sugar Shack.

- > The board voted to have Jan Aldrich serve as the representative on the WCSU executive committee with Joe Buley as the alternate. Julia Haynes will serve as representative on the WCSU policy committee with Brian Bishop as the alternate. Matt Curtis will serve on the WCSU transportation committee with Joe as the alternate. Jan will retain her position on the negotiating committee with Brian as the alternate. Carol Randall will be the truant officer. The committees will be comprised of the following board members: long range planning - Joe Buley and Brian Bishop; technology - Matt Curtis; community connections site council - Julia Haynes; PTNO - Julia Haynes.
- > Board retreats are scheduled for April 5, 13, and 29 with Ray Proulx.
- > The principal reported on the March 1 technology inservice, the March 18 parent conference inservice and the March 19 inservice which continued the work started in January.
- > The transition plans for pre-k to kindergarten and grade 6 to grade 7 are being reviewed and updated.
- > Standardized testing in grades 3-6 is in March.
- > Steve Towne was granted a family leave from May 7 through the end of the school year.

March 10, 2004

- > The board continued planning for their April retreats.
- > The board reviewed the work done by the WCSU policy committee. The policy must be posted for ten days prior to being adopted in any district.

U-32 Jr. Sr. High School

Ginny Burley, Chair
Sue Chickering
East Montpelier Members

March 24, 2004

- > Dan Greene reported from the library/media department the goal to support and enrich curriculum. The community is welcome to use the library and take advantage of the Van Go book mobile.
- > The board requested a job description and salary proposal for a new position of Special Services Coordinator.

Continued on Page 8

Continued from Page 7

- > The board voted to fund half the cost of the JV Boys Basketball team from the fund balance.
- > The board approved a staff member's request for sick leave from the staff pool for leave due to a son's illness contingent upon agreement that it is a one time only, isolated, non precedent setting incident.

April 7, 2004

- > Dot Blake reported that U-32's accreditation was Category I which is an exceptional achievement. The board approved a recommendation from the finance committee to establish an account at Banknorth for \$3.2 million at an interest rate of 1.35%.
- > Bonnie Mohlman & Amy Molina presented recommendations regarding U-32's becoming a community learning center. They also demonstrated the new online calendar and events scheduling system. It can be accessed on the web from U-32 or any off-site location.
- > The board voted to create the position of Coordinator of Special Services.
- > The board accepted with regret the following resignations: Barry Kopecky, George Olson, Shawn Martin, and Amy Otterman.
- > The board approved the following appointments: Judd L. Levine as Behavior Specialist and Den Heintz as Social Studies Teacher.

April 14, 2004

- > Based on the March financial statement, there will be \$11,000.+ surplus in the Food Service Program.
- > The Living Arts Department made a presentation on the Health and Living Arts Curriculum.
- > The board voted to accept the resignation of Kathleen Valway.

May 5, 2004

- > U-32 gratefully received a significant number of computers donated from National Life.
- > On June 4th the Student Community Outreach Project will have juniors and seniors working in local businesses and donating their earnings to the Humane Society. The board discussed developing this program into a service learning course.
- > The building project committee reported many items have been checked off the punch list.
- > The board reached consensus that it would be preferable to locate the WCSU central office on campus.
- > The board voted to approve a reduction in force in education support personnel.
- > The board voted to approve the designation of Ehren Miller-Nogueira - 0.2 Spanish teacher and to approve the appointment of Denise Dalmasse - 0.2 FTE English teacher.
- > The board retreat was rescheduled for June 23, 2004 at 5 p.m.

FOUR CORNERS SCHOOLHOUSE ASSOCIATION

The Four Corners Schoolhouse Association meets every month, and this month's meeting is coming right up. If you're interested in what goes on at these meetings, you are cordially invited to attend the 7 p.m. meeting on June 29th. Call Rachel Senechal if you have questions [223-0539].

In the last edition of the Signpost, we reported that longtime board member Paul Cate was stepping down and would be sorely missed. In appreciation for Paul's many contributions, the Board has decided to place a bench in the yard of the Schoolhouse in his honor.

In other business related to building use, the Board has recently approved use of the Schoolhouse by the preschool for the next three years. It was also reported that the Strong Living exercise program still meets but needs a trainer to continue.

The Four Corners Schoolhouse is available to all East Montpelier residents who need a place to meet. For information on usage or renting call Elaine Manghi [229-5811].

Rose Riley, Secretary

GREEN UP DAY REPORT

Thank-you to the many folks who rolled up their sleeves, put on their sun block and spruced up the roadsides of our town on Greenup Day. Mike Garand was overjoyed at what was accomplished — something that his road crew would have had a difficult time doing.

An incredible 3400 lbs. of trash and recyclable materials were collected from roadsides, as well as 103 car tires.

Separating recyclables was really helpful in minimizing what got buried in the landfill. Roughly 90 people signed in at the collection site and many others quietly picked up near home. Fourteen households offered to keep on greening up their local road all year-round. Thank you one and all!
Bill Merryles

THE LIST OF TOWN ROAD ADOPTERS GROWS

During the latest Green-Up Day, the following volunteered to adopt a road or portion within the town. These folks will keep an eye on these roads, pick up any trash and contact our road foreman, Mike Garand, if a condition requiring immediate attention develops. Thanks to all the volunteers for helping to keep our town looking good!

Bill Kaplan - Cummings Rd.: County Rd. to North Street
Cort Richardson & Ginny Callan - Guyette Rd.
Jan Burrus - Horn of Moon Rd.: Sanders Circle to Middlesex
Rob Chickering - Kelton Rd.
Jim Shea - Old Trail Rd.
Mike Duane & Ellen Knoedler - Markham Rd.
Doug & Renee Kievit-Kylar - Brazier Rd., south
Jennifer Boyer - Center Rd.: Dodge Rd. to Lyle Young Rd.
Colleen Hartford - North Street
Deb Post - Cherry Tree Hill: Towne Hill Rd. to brook
Richard Smith - Schoolhouse Rd.
Steve & Ann Giroux - Sibley Rd.: Sodom Pond to Center Rd.
Barb & Al Ploof - Barnes Rd.
Ben & Eliza Merrylees - Gallison Hill Rd.: Wheeler Rd. to Towne Hill Rd.

A PEEK AT THE PAST



Peach Roly-Poly Dorothy Folsom

Line a greased pudding dish with pie crust, edges hanging over.

Put in:

1 can sliced peaches or 10 or 12 fresh sliced peaches

½ package seedless raisins and 1 cup brown sugar

If fresh peaches are used add a little water. Lay the edges of pie crust over mixture and put pieces of butter on top. Bake in moderate oven until crust is brown. Serve with whipped cream.

RECIPES FROM THE COMMUNITY COOK BOOK

“Taste-Tested” with hints and up-date as needed

by *Paulie Coburn*

Paulie's Comments

This an easy, good desert. I used drained, canned peaches. Any fresh or canned fruit could be used and I would use less brown sugar as it was really too sweet.

Dorothy Folsom lived in North Montpelier and, like many others at that time, worked in the woolen mill.

The *Community Cook Book* was “sponsored” in the early 1940s by The Friendly Circle.

EAST MONTPELIER HISTORICAL SOCIETY

Anne Ormsbee, V.P./Treasurer

In April, David Coburn and Anne Ormsbee presented a slide program on sites in town that are on the State Register of Historic Sites, focusing on structures along Center Road, one of the town's early roads, and the historic district in East Montpelier Village. There are four sites on the National Register of Historic Sites: the Old Brick Church, the Coburn covered bridge, the Old Meeting House and the Parley Davis house in the Center.

In May, Barbara Fitch and Dot Morse, both long-time residents, shared memories of growing up in Vermont and living in East Montpelier. Barbara was born in West Chazy, NY, and moved with her family to Plainfield as a child. Her father worked in the stone sheds, and she recalled that he refused to join other granite workers when they went on strike in the 30's. Barbara was the only child in her family to graduate from high school. She married George Fitch in 1938, and they shared farm life for over 50 years.

Dot Morse grew up in Putney, VT and attended Keene (NH) State College. She taught school in Maple Corner, Calais and in East Montpelier for many years. She recalled that attendance at Teachers' Convention was mandatory and that an address by Wes Cate was an inspirational moment in an otherwise hum-drum meeting.

Both Dot and Barbara remembered self-sufficiency during the Depression: families raising their own meat, milk and vegetables, canning on the woodstove and making clothing. Dot said she got pretty sick of maple syrup during WW II rationing of white sugar. Both women grew up loving flowers, dancing, and making their own fun. Interestingly, each served as a telephone operator for a brief period and listened in once in a while.

We thank them for their reminiscences. It was a joy to meet with them.

The Society will not meet in July or August.

ATTENTION ARTISTS AND DOODLERS

The East Montpelier Historical Society would like to develop a logo to identify itself for mailings, exhibits, and events. The Society welcomes design entries from anyone.

For inspiration, look through "Across The Onion," town reports, old and new photos and news articles. Recall your child's school history project. Think about our town in the 21st century.

Submit entries by September 10, to Ann Ormsbee, 2190 Center, Rd., Montpelier, VT 05602, or EMHS, PO Box 271, East Montpelier, VT 05651

The winning designer will receive a copy of *Across The Onion*.

Open Everyday 8:30a.m. to 8:00p.m.

Maple Creemees Served Daily "Just gotta have one"

We ship
Anywhere

"A
Quality
Family
Farm
Shop"

802-223-5757

1 mile north of E. Montpelier Village on Rt. 14 (follow signs)



Vermont
Handicrafts

Gifts

Vermont
Cheese

Mail Order
Maple
Products

NEIGHBOR TO NEIGHBOR

KELLOGG-HUBBARD LIBRARY

Children's Corner

The Summer Reading Program Theme -
Telling Tales (or is it Tails?)

We have plenty of programs for children this summer to promote reading and creativity. Registration for the Summer Reading Program begins June 21. Each child pledges to read a number of books over the summer. This is not a contest, and the children may select whatever number of books they are comfortable pledging. Children may also be read to by a parent or older sibling. The first day for claiming your summer reading prizes is Monday, August 2, 2004. In keeping with our theme, our Tuesday Crafternoons are purrfectly pleasant! Our schedule is:

June 29 Pet Parade

July 6 "Don't Bug Me!" Make a Bug House

July 13 Spoon Pet; Cat's Meow-Make a Cat Nip Toy

July 27 Make Your Own Menagerie

August 3 Mutant Pets

August 10 Elephant Walkers.

These Tuesday programs are at 1 p.m. Please register by calling 223-4665.

Other summertime programs include our Annual Lawn Party on Saturday, July 3 from 11a.m. to 1 p.m. We'll be playing games, blowing bubbles, eating treats and dancing to a steel drum band. Start your 4th of July off right by coming to play on the 3rd! We have an evening Puppet Show on Thursday, July 22 at 6 p.m. at the Library and on July 29 we'll have a Puppet Show on the State House lawn at 12 noon, called "King Lear, The Western".

One of our perennial favorite summer programs is our Tie Dye Fest on Thursday, August 12 at 1 p.m. Bring shirts, socks, pillow cases and we provide the dye and clothespins.

For more information call us at 223-4665. See you in the Library.

Hilari Farrington, Librarian



THE POETRY OF YOUTH

The Last Mission of the First Shuttle

by: Evan Grade 4

Oh, how bold and brave, those people were,
To be sent into space,
And to face great loneliness,
So far away from their home's place.
And to face dangers, old and new, and hope not to be late,
To prevent themselves from tangling with
The horror of that fate.
Little did they know that when
They entered the atmosphere,
Their spacecraft would be turned into
A fiery, raging sphere.
The pieces of the shuttle, well,
They were scattered for miles 'round.
And most of them (of course, of course)
Were sighted on the ground.
A single "Roger" was scarcely heard,
But that was the only one,
Before they lost complete contact,
And the craft blew into oblivion.
Oh, how the people of the Columbia,
And many others more,
Had to face the very terrible truth,
That their fate was very poor.
So, woe betide any living thing
That travels into space,
To not shave off a bit of confidence
That they will safely reach their home's place.

A Prayer

by: Erin Grade 4

Let's say a prayer
For rain to come
So everyone will be happy
We will run and play
And sing all day
So let's say a prayer for rain to come.


PHILLIPS HomeEnergy SERVICES

BRIAN PHILLIPS
2075 VERMONT ROUTE 14 SOUTH
EAST MONTPELIER, VERMONT 05651
793-4013

OIL * PROPANE * AIR CONDITIONING * INSTALLATION * SERVICE


YARD WARE
OF VERMONT, L.C.

SPECIALIZING IN:
OUTDOOR STRUCTURES DECKS, PLAYSETS
GARAGES, SHEDS HOME RENOVATIONS
LANDSCAPING CLAPBOARDS, SHINGLES

JAY GRAVES 802-454-1103
2830 VT. RTE. 14 NO. PLAINFIELD, VT 05667



JAY SOUTHGATE - STEEPLEJACK

Jeff Cueto

It is certainly an unusual business that has chosen to call East Montpelier its home! After driving several times by a vacant building lot on Vermont Route 14 south, Jay Southgate decided it was the right location for his business, Southgate Steeplejacks. He had previously attempted to establish himself in Marshfield, a mile from where he lives with his wife and two children but ran into a zoning impasse that kept him searching. So in January 2003, Jay purchased the lot from Dick Casavant, and Marshfield's loss became East Montpelier's gain. Jay hired Connor Contracting, Inc. to build the woodworking and metal fabrication shop that serves as the central location for his business, a business that pretty well covers New England.

Many East Montpelierites know of Jay from work he did in 1991 on The Old Meeting House in the Center or later on The Old Brick Church in the Village after lightning damaged its steeple. As a matter of fact, the 44-year old Manchester, Mass. native pretty much cut his teeth on a major tower repair project at The Old Meeting House in 1991. As a church trustee and the manager for this particular project, I had the keen pleasure of working with Jay and learned how he handled his work with a depth of commitment and excitement that is rarely seen. Jay is a natural for this type of work in that he looks to be challenged and working well off of terra firma on structures that are inherently very complex presents that challenge.

Growing his business initially was not easy. After doing The Old Meeting House project, Jay had several fairly dry years relative to steeple work and depended more on general carpentry and woodworking. But a break came when he got a contract to work on the statehouse dome. He has been pretty busy since.

Some may remember Jay hanging off of the Washington County courthouse tower or the steeple of the Unitarian Church in Montpelier. He now has two jobs lined up that will carry him into 2005, churches in Clarendon, Vt. and Exeter, N. H. Needless to say, it is a specialized business with few competitors.

Jay's business has changed substantially since I first got to know him. The work on The Old Meeting House tower was almost exclusively on the job site. The tower still carried its old English tin roofing, which had seen its better days and leaked in several places resulting in incipient rot of the timber frame. It needed immediate attention if structural failure was to be averted. Jay first installed a maze of scaffolding from the ground to the weathervane. He then repaired the woodwork where necessary, including the fashioning of a new spire and ball at the very top, and hired separate subcontractors, one to paint the tower and another to install new lead-coated copper roofing. Now he limits the use of subcontractors and often does the majority of

the work at this East Montpelier operations center.

When I recently visited Jay to interview him for this piece, he had a major work in progress, total reconstruction of the steeple from the First Parish Church of Lexington, Mass. The structure was being constructed in a modular fashion for reassembly on site. A portion of the structure was set up horizontally in the shop like a pig on a spit. This enabled them to rotate it into different positions to facilitate the building. Jay showed me the shop drawings. This steeple would be considered somewhat high style compared to our humble Vermont structures of the same period. The millwork was simply amazing, and much of it was being done on stationary equipment from a by-gone era, old power tools that Jay collected over the years, no doubt saving them from the scrap pile. Not many shops can do a 12-foot turning! Because of the modular construction, Jay can work through the winter at his shop and, in this case, will limit the time on site for this 6-month project to 6-8 weeks. This gives him a bidding advantage over some other steeplejacks that do the majority of their work on site.

A focus of Jay's work is to complete projects in a manner that recognizes the steeples as being very susceptible to water damage and seldom get the same amount of maintenance that the main building receives. So they need to be tight. Judging from what I saw, Jay could take up a sideline producing boats and be very successful. Of course, a good roof is critical to tight construction. Consistent with his objective to limit subcontracting, Jay hired a former Twinfield student, Josh Sainz, to learn sheetmetal work. Josh is 21 and has worked with Jay for four years.



Josh Sainz

Jay Southgate

Paul Ruta

After I kid him about having one of the small number of businesses actually sited in the town's designated industrial district, I ask him if he regrets ending up in East Montpelier. The answer is an emphatic No! Based on his first full year of experience, he finds that his location provides excellent access to the businesses upon which he depends, industrial goods and woodworking equipment suppliers and lumberyards. It is also fairly central to his three employees who hail from Cabot, Plainfield, and Middlesex.

Is Jay still looking for challenges? Clearly he is, "The weirder, the better." You may agree when you see the new kiosk in front of the State tourism office in Montpelier, some interesting angles on that small structure! It was prefabricated in East Montpelier for site installation in Montpelier.

Jeff Cueto is an engineer with the VT Dept. of Environmental Conservation. He lives on Murray Road with his wife Linda and son Daniel.

COMMITTEE MEETING CALENDAR

Selectboard	1st & 3rd Monday	7:00	Town Office
Planning Commission (PC)	1st & 3rd Thurs.	7:30	Town Office
Zoning Board of Adjustment (ZBA)	2nd & 4th Monday	7:30	Town Office
Conservation Fund Advisory Comm.	2nd Thursday	7:30	Town Office
U-32 Board	1st & 3rd Wednesday	6:30	U-32 High School
Elementary School Board (EMES)	No meeting in July Meet on August 24	6:30	Elementary School
Recreation Board	3rd Monday	6:30	Town Office
Revolving Loan Committee	At call of the chair	6:30	Town Office
Volunteer Fire Department	Every Tuesday	7:00	Fire Station, Templeton Rd.
Four Corners Schoolhouse Assoc.	2nd Wednesday	7:00	Four Corners Schoolhouse

EAST MONTPELIER TOWN OFFICE

PO Box 157, East Montpelier, Vt 05651
Office Hours: M-Th 9:00-5:00 F 9:00-Noon
Phone: 802-223-3313

Clerk-Treasurer - Sylvia Tosi

email: eastmonttc@adelphia.net

Asst. Clerk-Treasurer - Terri Conti

email: eastmont2@adelphia.net

Asst. Clerk - Ginger Hopkins

Town Administrator - Marlene Betit

email: eastmontpe@adelphia.net

(Mon.-Tue. 9:00-5:00, Wed. 9:00-12:00)

Chief Lister - Rosie Cueto

(Mon.-Fri. 9:00-11:30)

Zoning Administrator - Dean Monteith

(Mon. - 2:00-5:00 pm

Thur. 10:00 am-1:00 pm)

email: eastmont3@adelphia.net

EVENTS CALENDAR

July 4	Independence Day		
August 16	Battle of Bennington Day		
August 25	Opening day of school - all grades		EMES
August 25	Opening day of school - grades 10 through 12		U-32
August 26	Opening day of school - grades 7 through 9		U-32
September 11	Rally Day	All day	EMES and environs

See Page 10 for the schedule of events at the Kellogg-Hubbard Library

Have a nice quiet summer

Deadline for next Issue: August 1, 2004 — to Dave & Darlene Grundy — 476-4300 {ddgrundy@aol.com}

East Montpelier Signpost
PO Box 184
East Montpelier, Vermont 05651
Return Service Requested

PRSR STD
U.S. Postage
PAID
Permit No. 43
Barre, VT

Volume XIV, No. 6
July/August 2004

Inside:
The Cotes and the
Seepjack

Printed on recycled paper with soybased ink